



# IFAA WFAC 2018 South Africa



The South African National Archery Association (SANAA)  
Member of the International Field Archery Association (IFAA)

Under Patronage of:



# DATE AND VENUE

Date	5 to 13 October 2018
Venue	Elgro River Lodge Potchefstroom North West Province South Africa



# ELGRO RIVER LODGE

---

The Elgro River Lodge has hosted many competitions as well as National Archery Championships.

The Willgro Group was the proud hosts of the IFAA World Bowhunter Championships held in 2013.

A true African Experience on a Game Farm with over eleven species of Game.

Elgro River Lodge: [www.elgroriverlodge.co.za](http://www.elgroriverlodge.co.za)

The Elgro River Lodge, situated on the banks of the mighty Vaal River, stretches over 3 kilometres of the river and offers superb riverfront views. What makes this lodge even more unique is the fact that it is located in the Western region of the magnificent Vredefort Dome, declared as a UNESCO World Heritage Site in 2005.

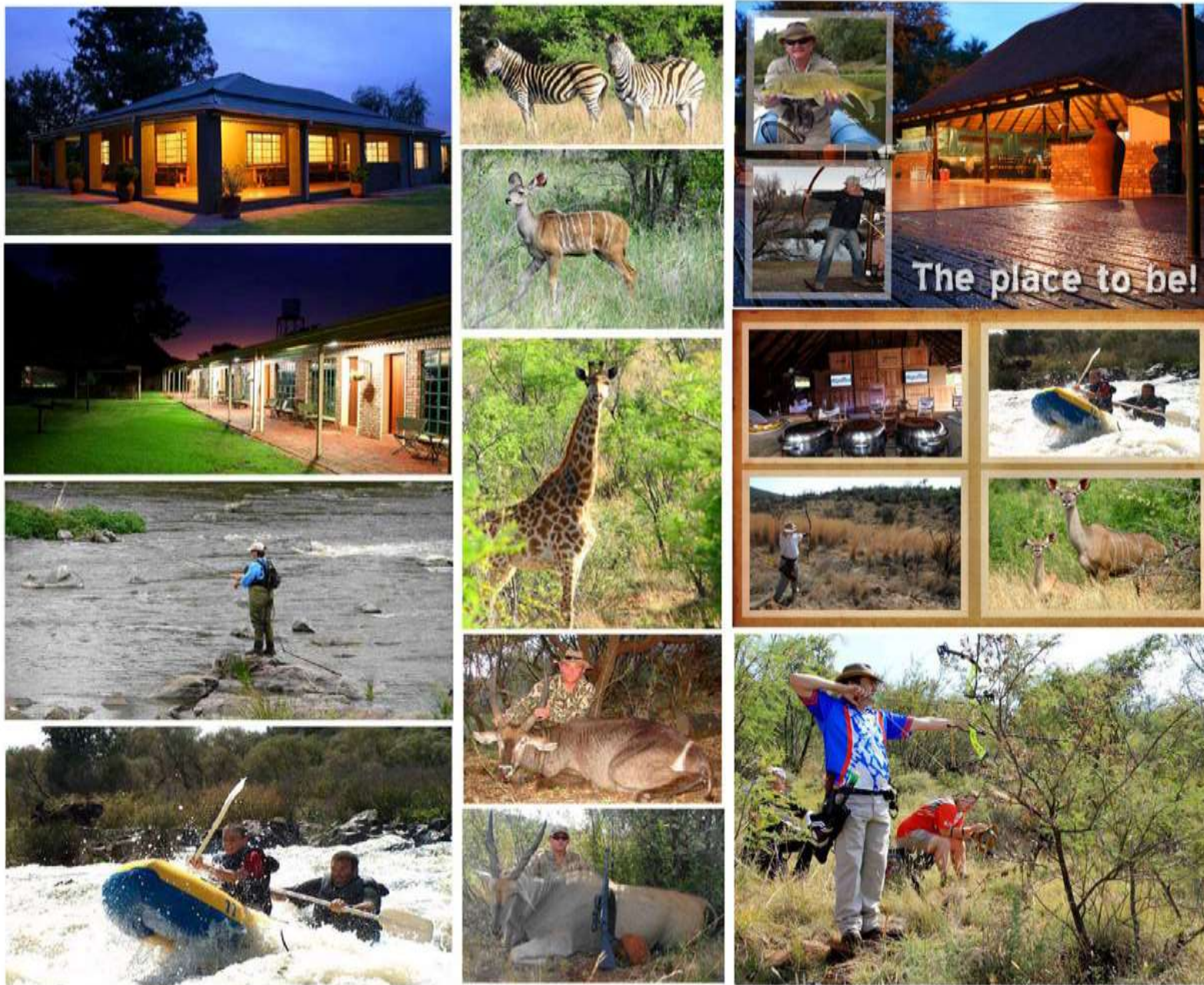
The River Lodge offers a true African experience with a variety of activities available. As continuation of nature preservation, this area is also a Yellow fish Conservation site offering some of the best Yellow fish fly-fishing in the country. The River Lodge offers up to 20 kilometres of pristine fly fishing water for small and large mouth yellow fish and contributing to a total fly-fishing experience is a basic Fly Fishing Shop at the lodge.

River rafting for the brave at heart accompanied by an experienced guide will get the adrenalin pumping and will ensure a memorable ride on the rapids of the beautiful Vaal River.

If you prefer to steer clear of water activities, an action packed game drive will entice you with a great diversity of game such as the Impala, Eland, Kudu and 180 species of bird life. Grab your binoculars and indulge in bird watching and animal spotting, for around every bend, nature at its undisturbed best will surprise and entertain you.







4



# RANGES

The organisers of the 2018 WFAC will provide up to 4 ranges:

- Range 1 (White):** 28 Target Range to accommodate the Field/Hunter/Animal Round
- Range 2 (Green):** 28 Target Range to accommodate the Field/Hunter/Animal Round
- Range 3 (Yellow):** 28 Target Range to accommodate the Field/Hunter/Animal Round
- Range 4 (Blue):** 28 Target Range to accommodate the Field/Hunter/Animal Round

## **Practice Ranges:**

Each of the preferred accommodation venues i.e. Elgro Hotel, Willows Garden Hotel and Elgro River Lodge will have its own practice range setup with 14 target butts, each managed by a Practice Range Marshal.

*(Archers not staying with the Elgro Group will only have access to the practice range at Elgro River Lodge on official practice days.)*

## **Officials (Range 1 to 4):**

Each range, due to the distances apart, will have the following allocated officials:

- 1 x Range Captain
- 2 x Maintenance Officials / Marshals
- 1 x Transport Official
- 1 x Gate Guard

## **Equipment Repairs and Maintenance**

Facilities for maintenance and repairs on equipment will be available at ELGRO RIVER LODGE throughout the Championships.





# AERIAL PHOTOGRAPHS

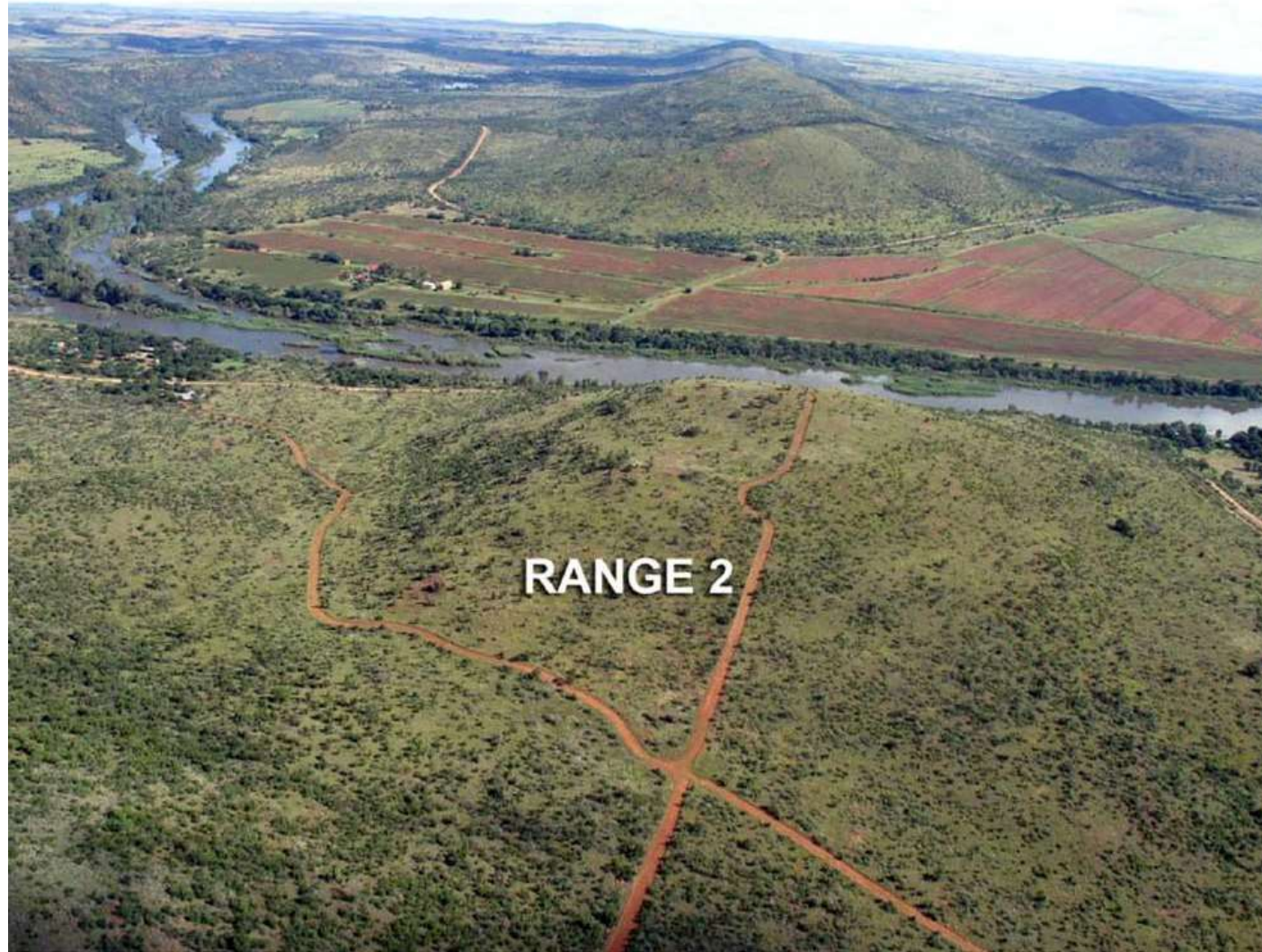
## Planned Ranges





# AERIAL PHOTOGRAPHS

## Planned Ranges





# AERIAL PHOTOGRAPHS

## Planned Ranges





# AERIAL PHOTOGRAPHS

## Planned Ranges



IFAA World Field Archery Championships 2018



# PRACTICE RANGES

There will be dedicated practice ranges at each of the venues where guests are accommodated.





# CATERING ON RANGES

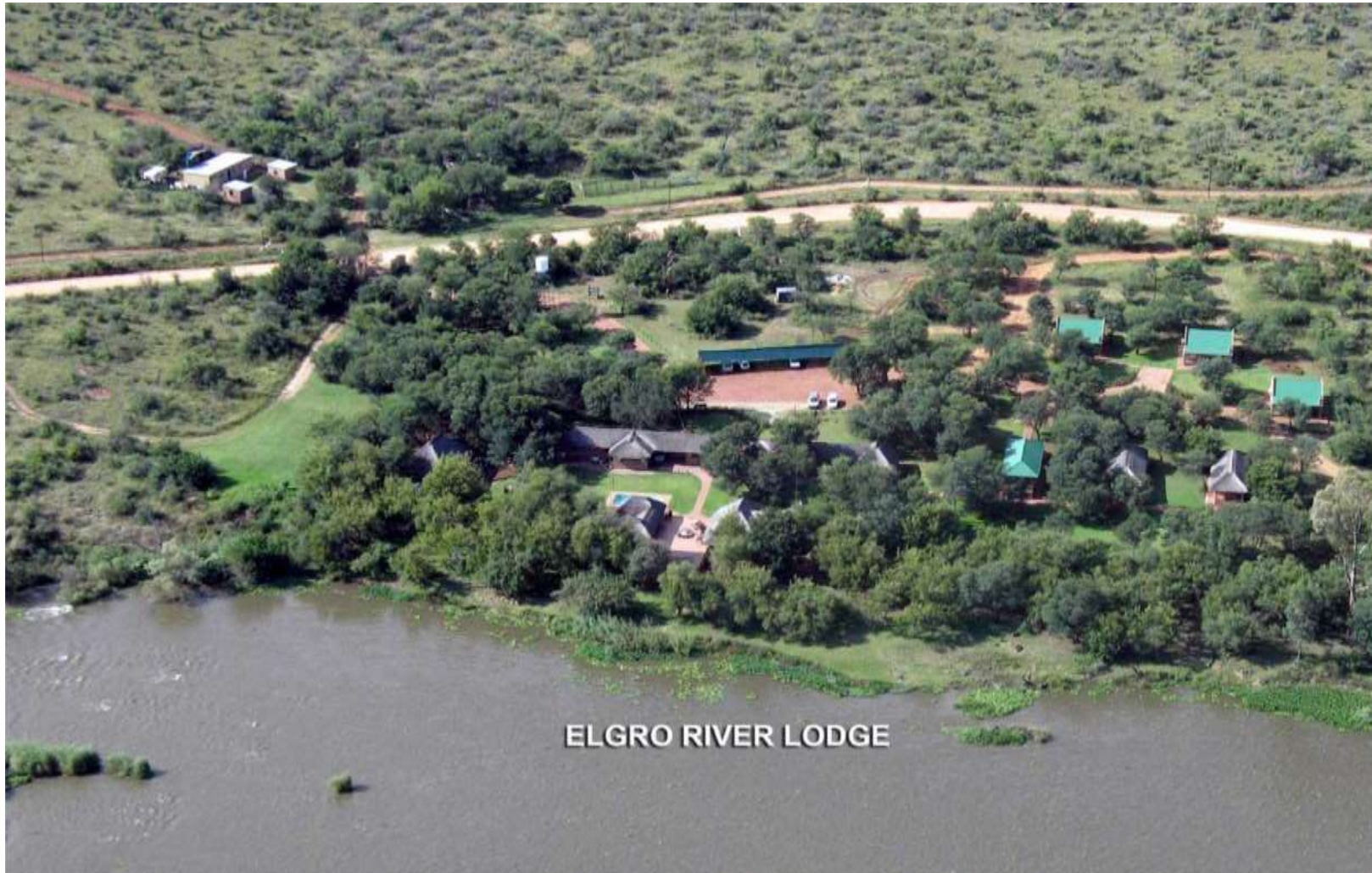
The Willgro Group will have a refreshment station and at least one water point on each range. These refreshments are not included in the tournament registration fees or in the package deals and are payable at the stations in ZAR currency.





# ESTIMATION

South Africa will cater for 350 participants. More ranges can be build if needed.





# PROGRAM

Date	Day	Description
5 Oct	Friday	Registration and equipment inspection opens at 13:00 and closes at 17:00 Practice ranges are open from 09:00 to 17:00
6 Oct	Saturday	Registration and equipment inspection opens at 09:00 and closes at 17:00 Practice ranges are open from 09:00 to 17:00
7 Oct	Sunday	Registration and equipment inspection opens at 09:00 and closes at 13:00 Practice ranges are open from 09:00 to 13:00 The opening ceremony will be in front of the Elgro Hotel, starting at 14:00 Late registration from 17:00 to 18:00
8 Oct	Monday	Only the practice range at the Elgro River Lodge will be open from 07:00 to 08:30 Muster 08:30 09:00 to 16:30 - Day One Field Round
9 Oct	Tuesday	Only the practice range at the Elgro River Lodge will be open from 07:00 to 08:30 Muster 08:30 09:00 to 16:30 - Day Two Hunter Round



# PROGRAM

Date	Day	Description
10 Oct	Wednesday	Only the practice range at the Elgro River Lodge will be open from 07:00 to 08:30 Muster 08:30 09:00 to 16:30 - Day Three Animal Round
11 Oct	Thursday	Only the practice range at the Elgro River Lodge will be open from 07:00 to 08:30 Muster 08:30 09:00 to 16:30 - Day Four Field Round
12 Oct	Friday	Only the practice range at the Elgro River Lodge will be open from 07:00 to 08:30 Muster 08:30 09:00 to 16:30 - Day Five Hunter Round From 19:00 Banquet and Medal Presentations, Elgro Hotel
13 Oct	Saturday	Departure

*Daily updates regarding the tournament will only be available at the Elgro Group Hotels or on the official website <http://wfac2018.co.za>*





# ADMINISTRATION CENTRE

The administration centre will be managed by an administration committee consisting of members from SANAA. The following sections have been identified and will have designated areas at the Elgro Hotel:

## **Reporting and Registration:**

- Reception area - 5 x Volunteers

## **General Enquiries:**

- Reception area - 2 x Volunteers

## **Data & Score Capturing:**

- Fleur du Cap Room - 4 x Volunteers

## **Equipment Inspection:**

- Drostdy Hall - 3 x Volunteers

A Satellite Administration Centre will be at the Elgro River Lodge to deal with all range and general inquiries as well as daily score capturing.

Scores and information can be updated online, and will be available as captured by administrators.

A backup facility will be available.

A domain/website will also be registered and designed which will provide all relevant information such as registration detail, venue and ranges, accommodation, etc to the participants.

The website will be managed and updated by the SANAA IT and Data Manager.



# REGISTRATION FEES

---

- Veteran, Adult and Young Adult: € 135 (Euro)
- Juniors: € 70 (Euro)
- Cubs: € 70 (Euro)

*All bank costs are for the remittance bank account.*

Confirmation of registration will on be done on receipts of payments.

Registration/entry fees cover the costs of entering the tournament only and shall not include extras such as pins, patches, T-shirts, caps etc. These items shall be sold separately.

The costs of the award banquet and any extra festivities, excluding the opening ceremony, shall be advertised separately. The award banquet is included in the available accommodation packages.

Registration fees for the “Best Style Team” shall be ZAR 300 (about € 20) for each team.

ONLY online registrations will be accepted at <http://wfac2018.co.za>

Online registration will open from 01 October 2017.

The list of registrations shall be maintained/updated on a monthly basis. Final update shall be on 31 August 2018. Registration shall close on 31 August 2018.





# REFUNDS

---

Reimbursement of registration fees in the case of a written cancellation:

- Before 01 May 2018: 90%
- Before 01 August 2018: 75%
- After 01 August 2018: No refund

The refund shall exclude any banking fees that are charged to SANAA.



# ACCOMMODATION

---



Potchefstroom Willgro Group offers a range of accommodation options to suit all tastes and budgets. Places to stay vary from four-star hotels and a luxury lodge to comfortable, yet stylish bed-and-breakfast establishments. The hotels are centrally located within a 20 minute drive from Elgro River Lodge. A shuttle service for all hotel guests has been arranged to and from the desired venues within the Willgro Group Potchefstroom.

All Accommodation and Traveling arrangements are handled by the central reservations office situated at the Elgro Hotel in Potchefstroom.

**Contact person:** Wilna Hill – [elgrolodge@iafrica.com](mailto:elgrolodge@iafrica.com) / +2718 297 5411





# ACCOMMODATION

Elgro Hotel | Willows Garden Hotel | Elgro River Lodge

**Elgro Hotel:** [www.elgro.co.za](http://www.elgro.co.za)

A three star country Hotel situated in Potchefstroom (North West Province).  
20 minute drive (28 km) from the Elgro River Lodge (Location of Ranges).  
Venue of the WFAC 2018 Opening and Closing Ceremonies.



# ACCOMMODATION

Elgro Hotel | Willows Garden Hotel | Elgro River Lodge

**Willows Garden Hotel:** [www.willowsgardenhotel.co.za](http://www.willowsgardenhotel.co.za)

Set amongst the willows in the 'Green Belt' of Potchefstroom on the Mooi River. This four star Hotel also overlooks a 18 hole golf course of unsurpassed beauty. It is also within walking distance of a modern and lavish mall, very popular among international guest, athletes and those with a flair for the more cosmopolitan.





# ACCOMMODATION

Elgro Hotel | Willows Garden Hotel | Elgro River Lodge

**Elgro River Lodge:** [www.elgroriverlodge.co.za](http://www.elgroriverlodge.co.za)

The River Lodge has 9 comfortable and cosy self-catering riverside chalets, fully equipped with access to a swimming pool and breath-taking views.

The Owl's Cottage, another unit at the River Lodge is a luxury location that can accommodate 30 people. This cottage boasts its own swimming pool and conference facility.



# ACCOMMODATION PACKAGE: SHARED ROOM

---

Pricing structure for SHARED ROOM ACCOMMODATION at the following accommodation venues:

Willows Garden Hotel ★ Elgro Hotel ★ Elgro River Lodge ★ Elgro River Lodge Owl's Cottage

## All Inclusive R 10,050.00 per person

### ACCOMMODATION PACKAGE INCLUDES:

1. Accommodation : Arrival: 6 October 2018 - O.R. Tambo Airport  
Departure: 13 October 2018 - Potchefstroom
2. Full English Breakfast x 7
3. Full Carvery Dinner x 6 and award ceremony banquet
4. Access to the practice ranges at the hotel/lodge
5. Secured parking
6. Return Transport from and to O.R TAMBO Airport
7. Transport to and from Elgro River Lodge for the duration of the championships

*Should the guests wish to reserve an extra night please contact Elgro Group for the nightly rate.*

**Note:** Transport from and to O.R. Tambo and to and from the ranges is only applicable if staying at the Elgro Group.

*WFAC 2018 Entry fee is excluded from accommodation package.*





# ACCOMMODATION PACKAGE: SINGLE ROOM

---

Pricing structure for SINGLE ROOM ACCOMMODATION at the following accommodation venues:

**Elgro Hotel - Single Room (30 available) : ZAR 15,650.00**

**Willows Garden Hotel - Single Room (4 available) : ZAR 16,550.00**

## **ACCOMMODATION PACKAGE INCLUDES:**

1. Accommodation : Arrival: 6 October 2018 - O.R. Tambo Airport  
Departure: 13 October 2018 - Potchefstroom
2. Full English Breakfast x 7
3. Full Carvery Dinner x 6 and award ceremony banquet
4. Access to the practice ranges at the hotel/lodge
5. Secured parking
6. Return Transport from and to O.R TAMBO Airport
7. Transport to and from Elgro River Lodge for the duration of the championships

*Should the guests wish to reserve an extra night please contact Elgro Group for the nightly rate.*

**Note:** Transport from and to O.R. Tambo and to and from the ranges is only applicable if staying at the Elgro Group.

*WFAC 2018 Entry fee is excluded from accommodation package.*



# CEREMONY

## OPENING AND CLOSING CEREMONIES

The Elgro Hotel Convention Centre will be utilised for the Opening as well as Closing Ceremonies. The Venue can accommodate a Flag parade at the opening ceremony after which the flags will be hoisted to hang in the centre of the hall from the ceiling. The opening ceremony will entail a cocktail with traditional dancers who will provide entertainment to the attending guests.



The closing/medal ceremony will consist of a sit down buffet dinner and the awarding of medals from a podium and the lowering of the flags to be handed over to the respective country representatives. The buffet in true African tradition will be served after completion of the medal awarding ceremony. Traditional dancers will again entertain the guests.





# CEREMONY



March of the Nations





# CEREMONY

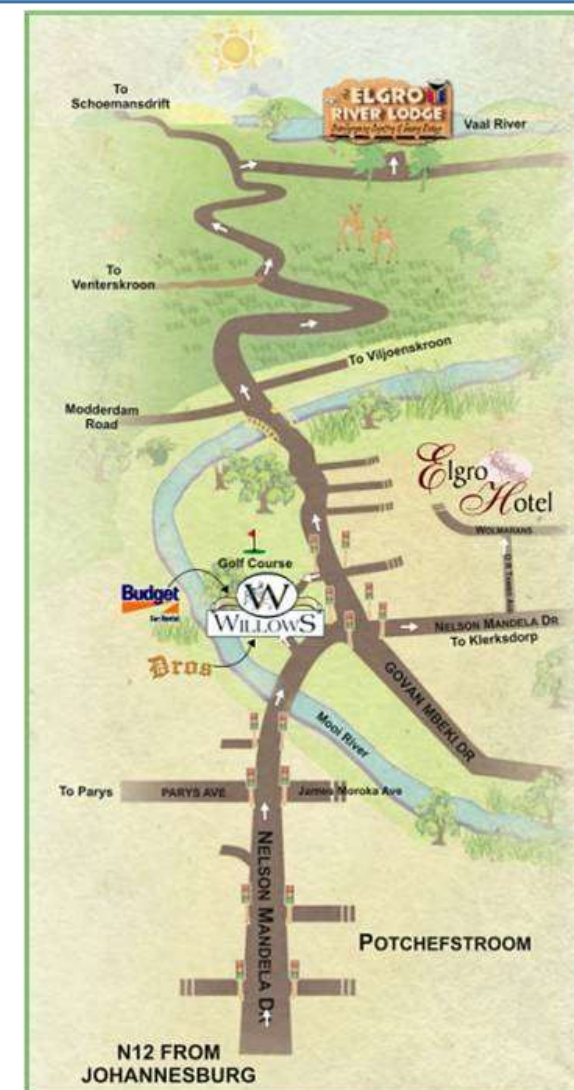




# DIRECTIONS

**GPS Co-ordinates: S25° 45' 10" E28° 14' 46"**

1. O.R. Tambo International Airport, Kempton Park
2. Head northwest on Bonaero Drive towards Kanaero Street - 2,0 km
3. Turn left toward Atlas Road - 250 m
4. Turn right onto Atlas Road - 280 m
5. Take the 1st left to stay on Atlas Rd - 350 m
6. Take exit 41 on the right to merge onto R21 toward Kempton Park/R24/Johannesburg/O R Tambo International Airport/Boksburg - 4,3 km
7. 6. Take the exit on the right onto R24 toward N3/Johannesburg - 9,2 km
8. Take the exit onto R24 - 1,7 km
9. 8. Take exit 113 for N3 S/N12 toward M2/Kimberley/Germiston/Durban - 1,2 km
10. Merge onto N12/N3 Continue to follow N12 – 25,4 km
11. Take exit 67 for M68 toward Soweto - 450 m
12. Keep right at the fork, follow signs for N12/Bloemfontein/Kimberley and merge onto N1/N12 - 5,2 km
13. Slight right onto N1 - 69,6 km
14. Take exit 498 for R59 toward Parys/Sasolburg - 550 m
15. Turn right onto R59 - 18,8 km
16. Turn right onto Water St/R59 Continue to follow R59 - 5,8 km
17. Turn right - 2,7 km
18. Turn left - 21,2 km
19. Turn right - 6,9 km
20. Turn left - 1,5 km
21. Turn left Restricted usage road
22. Destination will be on the left - 58 m Elgro River Lodge



# ENTRY POINTS SOUTH AFRICA

Airports Company South Africa operates South Africa's 10 principal airports - including three major international airports - which together handle over 200 000 aircraft landings and 23-million passengers annually.



OR Tambo International Airport (formerly Johannesburg International) is the major gateway, offering both domestic, African regional and international connections. Altogether there are more than 30 airports in SA, ranging from smaller airports for cross-border flights to and from neighbouring countries to larger airports for flights to and from other African airports.





# GENERAL ENTRY INFO

---

## Language & Standard of living

South Africa has 11 official languages. While each language is technically equal to every other, English is the most widely spoken language in the country.

The standard of living is equivalent to that of Western Europe. The economy of South Africa is the largest and best developed on the continent, with modern infrastructure common throughout the country.

## Malaria

No malaria in North West province.

## Tourist Visa

Travellers from EU and Commonwealth countries do not need to formally apply for a visa. Upon arrival in South Africa, you will automatically be given a free tourist visa. This automatic entry permit is usually valid for a maximum of 90 days, though the immigration officer may tailor the time period according to the airline tickets held. It is the responsibility of each traveller to confirm themselves if they will need a VISA to enter South Africa.

However it is important that your passport be valid for no less than 30 days beyond date of departure from South Africa and contains at least two unused pages for entry/departure endorsements.



# TRAVEL

---

## **Airport Shuttles**

If one of the Willgro Accommodation Packages are used, the Transport from O.R TAMBO Airport and back will be arranged through the group and is inclusive of price in package.

Transport to and from Elgro River Lodge for duration of the Championships is also included in the package price.

## **Car Hire Services**

Car Hire services is available at the airport or can be arranged prior to entering South Africa.





# MEDICAL

Medicare 24 Hour Medical Centre  
Tel: +2718 294 3251  
Fax: +2718 293 0384  
72 Lombard Street

Medi-Cross  
Tel: +2718 297 0650  
Fax: +2718 297 0658  
Crn. Van Riebeeck/Lombard Street

Medi Clinic (Medicity)  
Tel: +2718 293 7000  
Fax +2718 297 6225  
66 Meyer Street

Mooimed Hospital  
Tel: +2718 293 0802  
Fax: +2718 297 0726



Emergency services are available from Netcare 911 (Pty) Ltd which is a wholly-owned private entity and is a pre-hospital risk management and emergency assistance subsidiary of Network Healthcare Holdings Ltd (Netcare), which operates and manages the largest hospital, private ambulance service and doctor network in the world.

*All cost is for own account.*



# LOCAL CLIMATIC CONDITIONS

## ALTITUDE

Potchefstroom is the only place in the world with a perfect balance between altitude training and quality training at **1400m**. The fact that Potch (shortened name) has no large scale factories it has very clean air.





# CLIMATE

Potchefstroom: Subtropical zone

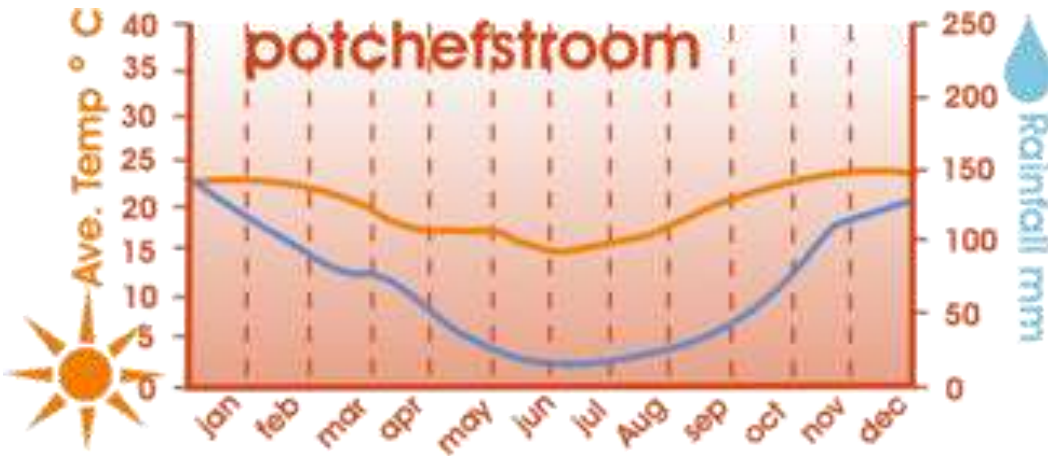
South Africa stretches between the 22nd and 34th degree of southern latitude and hence is part of the subtropical zone.

The climatic conditions in South Africa are largely dependent on the altitude of the area and its proximity to the ocean.

Due to the height of 1500m (4920ft) above sea-level, the climate in Potchefstroom is nice during summer and very cold in winter.

Potchefstroom gets an annual average of between 8-10 hours of sunshine per day.

Potchefstroom has fantastic weather with a subtropical climate. Average temperatures for September / October 10\* C (min) to 28\* C (max). Rainfall occurs during the summer and we might have some during this tournament. Every season offers excellent sport participation conditions.



# TIME ZONE

---

## Central European Time (CET)

As South Africa is not part of the territories operating Daylight Saving Time, hence there is no time difference to CET from April until October.

From November until March the time difference to CET is +1 hour. With a direct flight from any airport in central Europe travellers arrive within 10-11 hours in Johannesburg without jetlag.

